



Administrator's Guide to Pixie

2008 Edition

Credits

Pixie™

Programmers: Rodger Cook, Jeremy Wood, Michael Brewer

Design: Rodger Cook, David Wagner, Dallas Jones, Melinda Kolk

Pixie Administrator's Guide

Authors: David Wagner, Melinda Kolk, Dallas Jones

Editors: Carolyn Daly, Rodger Cook

Library

Artists: Melinda Kolk, Doug Sherman, David Wagner

The library of clip art and music that ships with Pixie would not have been possible without the help of some wonderful friends. We want to thank:

Gene Bias from Orange County, FL for creating the music for the slideshow; Ann Marie Turpin, Blake Matos, and Irene Gutierrez from Denair Middle School in Denair, CA for their assistance building the clip art collection.

Notice of Rights

Pixie, Pixie User Guide, Pixie Administrator's Guide

©2008 by Tech4Learning, Inc.

All Rights Reserved.

No part of this publication may be translated into any language without written permission of Tech4Learning, Inc.

Tech4Learning and Recipes4Success are registered trademarks of Tech4Learning, Inc. Pixie, the Pixie logo, and the Tech4Learning logo are trademarks of Tech4Learning, Inc. Other brands and trademarks are the property of their respective owners.

For information about other Tech4Learning products, visit our web site at:

<http://www.tech4learning.com>

For additional training materials, visit our support web site at:

<http://www.recipes4success.com>

For customer service and support, contact:

Customer Care: 877-834-5453 or info@tech4learning.com

Technical Support: 619-563-5348 or support@tech4learning.com

8:00am to 5:00pm Pacific Time, Monday through Friday, except holidays.

PX.2.0.022008

Table of Contents

Credits	2
Customizing Pixie	4
Editing Tech4learning.ini	4
Location of Media	5
Changing the Location of the Shared Media	5
Adding Folders to the Stickers.....	5
Adding Folders to the File Chooser	6
Override User Preference Changes	7
Application Performance	7
Windows XP SP2 Security Settings	9
Changing Internet Options	10
Session Logs	12
Saving the Log File.....	12
Proxy Server Settings	14

Customizing Pixie

You can customize Pixie to extend the program to meet your needs. Individual users can customize the program using the Preferences. Preferences are user specific.

You can also customize the Pixie application to override the user Preferences and set program defaults for every Pixie user on a computer. This is done using the Tech4Learning.ini file in the Pixie folder in the application directory.

The Tech4Learning.ini file can customize many Pixie settings, including:

- The location of the shared media
- Additional folders for the Stickers
- Additional locations for the File Choosers

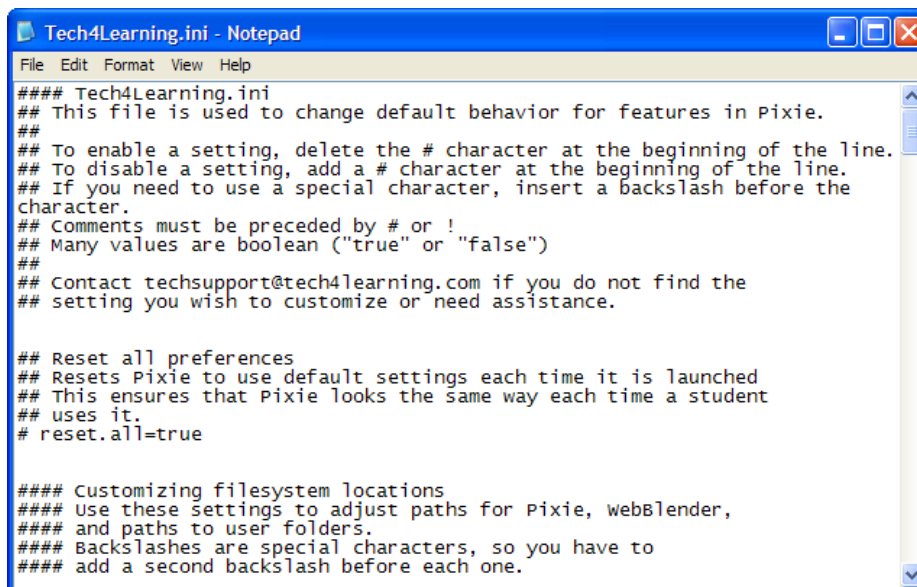
Once you have edited the Tech4Learning.ini file with the settings you want, you can push or image this file to multiple computers on a network.

Editing Tech4learning.ini

On Windows, go to C:\Program Files\Tech4Learning\Pixie 2. Open Tech4Learning.ini using Notepad.

On Macintosh, go to Macintosh HD\Applications\Pixie 2. Open Tech4Learning.ini using Text Edit.

On Linux, go to /usr/lib/tech4learning/pixie. Open Tech4Learning.ini using a text editor.



```
##### Tech4Learning.ini
## This file is used to change default behavior for features in Pixie.
##
## To enable a setting, delete the # character at the beginning of the line.
## To disable a setting, add a # character at the beginning of the line.
## If you need to use a special character, insert a backslash before the
character.
## Comments must be preceded by # or !
## Many values are boolean ("true" or "false")
##
## Contact techsupport@tech4learning.com if you do not find the
## setting you wish to customize or need assistance.

## Reset all preferences
## Resets Pixie to use default settings each time it is launched
## This ensures that Pixie looks the same way each time a student
## uses it.
# reset.all=true

##### Customizing filesystem locations
##### Use these settings to adjust paths for Pixie, webBlender,
##### and paths to user folders.
##### Backslashes are special characters, so you have to
##### add a second backslash before each one.
```

Location of Media

All of the local media for Pixie, including stickers, backgrounds, activities, slideshow music, and themes, is stored outside of the Pixie folder on the computer. All users on the computer must have read access to these files to be able to use them in Pixie.

On Macintosh OS X, the files are located at:

```
/Library/Application Support/Tech4Learning/Shared
```

On Windows XP and Vista, the files are located at:

```
C:\Program Files\Tech4Learning\Shared
```

On Linux, the files are located at:

```
/usr/lib/tech4learning/shared
```

Changing the Location of the Shared Media

It is possible to place the Shared media folder on a network drive in order to save space on local computers and simplify making universal changes to the media.

Open Tech4Learning.ini.

Scroll down until you see a line for the Shared Media Location.

```
## shared media location  
# media.home=/Library/Application Support/Tech4Learning/Shared
```

Edit the location by deleting the # symbol at the beginning of the line and then entering the new location after the = sign. Backslashes are special characters, so you have to add a second backslash before each one.

```
## shared media location  
media.home=\\\\192.168.0.145\\media\\shared
```

The next time Pixie is launched on this computer, it will look for the media resources on the network drive you specified.

Adding Folders to the Stickers

You can add folders on your computer or network to the Stickers library. This allows you to add additional art to Pixie without moving/copying it into the Shared media folders.

Open Tech4Learning.ini.

Scroll down until you see a line for adding custom directories.

```
## Add custom directories to the stickers.  
# library.directories.0001 = C:\\Directory  
# library.directories.0002 = C:\\DifferentDirectory
```

Edit the location by deleting the # symbol at the beginning of the line and then entering the new location after the = sign.

```
## Add custom directories to the stickers  
library.directories.0001=\\\\192.168.0.145\\media\\clip_art
```

The next time Pixie is launched, the locations specified will be included in the Stickers library.

Adding Folders to the File Chooser

You can add folders on your computer or network to the File Chooser. This allows users to open and save from these locations without having to navigate through the file system.

Open Tech4Learning.ini.

Scroll down until you see a line for the Added directories.

```
## Added directories - Add custom directories to  
## the open dialog.  
# filechooser.library.directories.1=E:\\Users\\student\\special  
# filechooser.library.directories.2=/media/shared/student_files/
```

Edit the location by deleting the # symbol at the beginning of the line and then entering the new location after the = sign.

```
## Added directories - Add custom directories to  
## the open dialog.  
filechooser.library.directories.1=E:\\Users\\student\\Activities  
filechooser.library.directories.2=\\\\192.168.0.145\\media\\Grade_3
```

The next time Pixie is launched, the locations specified will be included in the file choosers.

Override User Preference Changes

You can override changes users make to the Preferences so the program will always launch using the default Preference settings.

Open Tech4Learning.ini.

Scroll down until you see a line called Reset all preferences.

```
## Reset all preferences
## Resets Pixie to use default settings each time it is launched
## This ensures that Pixie looks the same way each time a student
## uses it.
# reset.all=true
```

Edit the setting by deleting the # symbol at the beginning of the reset.all=true line.

```
## Reset all preferences
## Resets Pixie to use default settings each time it is launched
## This ensures that Pixie looks the same way each time a student
## uses it.
reset.all=true
```

Pixie will always launch using the default preferences.

Application Performance

You can set defaults in Pixie to improve application performance on older computers. These include reducing the number of times a user can undo an action and turning off the animation while sorting pictures in Share mode. Both of these items are processor and memory intensive.

To change these settings, open Tech4Learning.ini.

Scroll down until you see the Undo Limit setting.

```
## Undo Limit
## One of: 5, 50, 200
# actionManager.undoQueue.limit=50
```

Edit the setting by deleting the # symbol at the beginning of the actionManager.undoQueue.limit line. Change the number after the = sign to 5.

```
## Undo Limit
## One of: 5, 50, 200
actionManager.undoQueue.limit=5
```

With this setting Pixie users will only be able to undo five actions.

Scroll down until you see the Animated Slide Sorting setting.

```
## Animated slide sorting
## set to true or false.
# slideSorter.animatesSlides=false
```

Edit the setting by deleting the # symbol at the beginning of the slideSorter.animatesSlides line.

```
## Animated slide sorting
## set to true or false.
slideSorter.animatesSlides=false
```

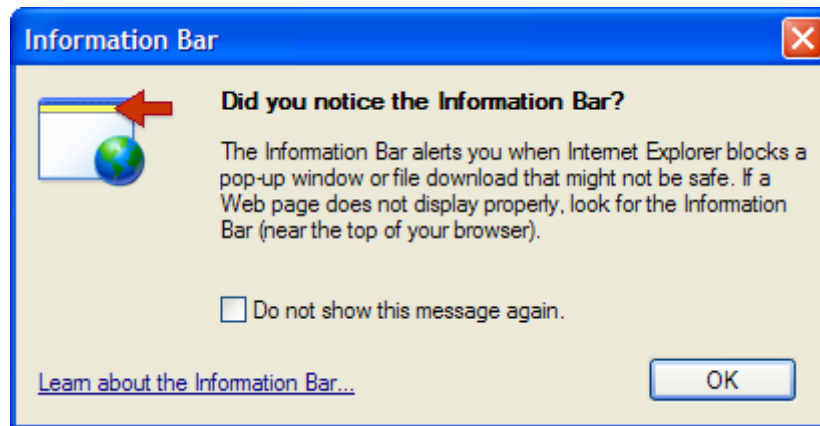
With a “false” setting, thumbnails will not animate when changing the order of pictures in Share mode.

Windows XP SP2 Security Settings

Windows XP Service Pack 2 introduced new security features that may block features in HTML pages published from Pixie when you are looking at sites you have published locally.

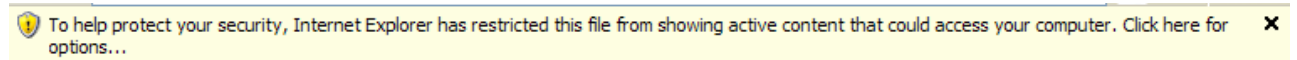
You can change the settings in Internet Explorer so the content is not blocked.

If content on a page is blocked, you will see the Information Bar dialog with a message.

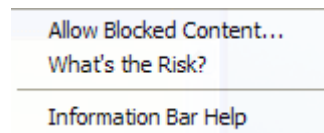


Click the **OK** button.

There will be an Information Bar at the top of the browser window.

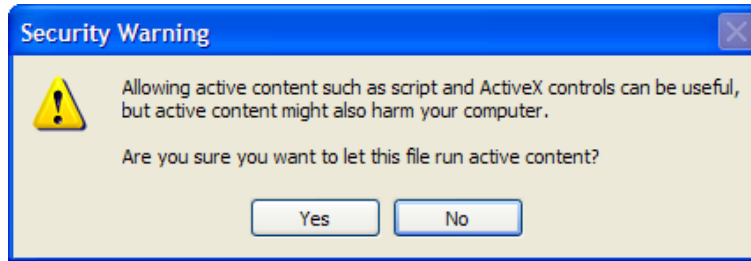


Click the right side of the Information Bar. You will see a menu of options.



Click **Allow Blocked Content**.

You will see a Security Warning dialog.



Click the **Yes** button.

You will be able to view the content.

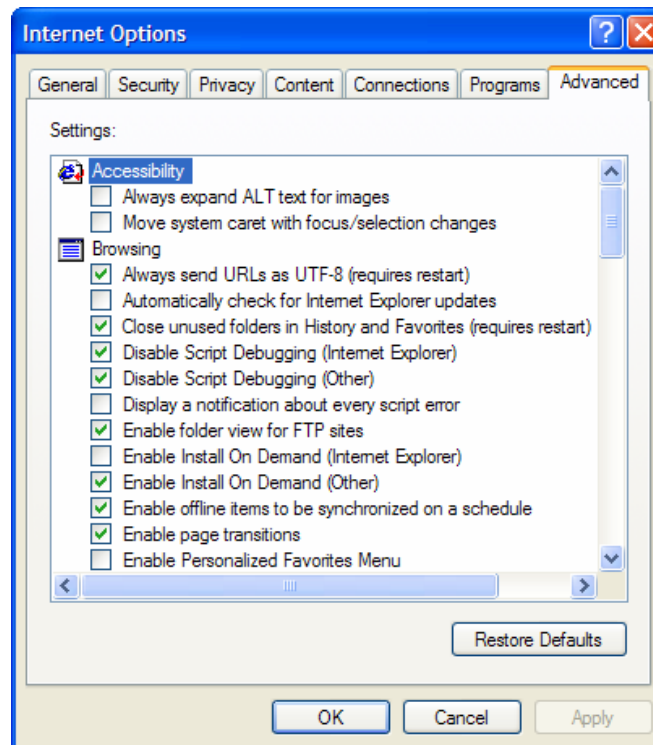
Changing Internet Options

You can change the settings for Internet Explorer so that you do not see this warning message.

Go to the **Tools** menu and choose *Internet Options*.

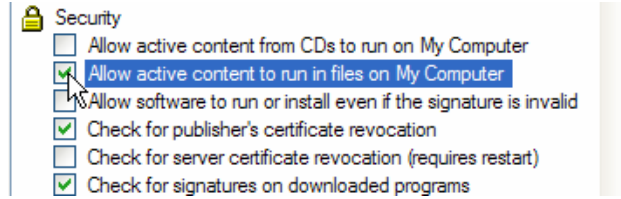
You will see the Internet Options dialog.

Click the **Advanced** tab.



Scroll down until you see the Security settings.

Click the **Allow active content to run in files on My Computer** check box.



Click the **OK** button.

You will no longer receive a warning when you try to view pages published from Pixie.

Session Logs

Pixie stores a log for each user session. In case there is a program error during the session, these logs help Tech4Learning identify and fix errors in the program.

On Macintosh OS X, the file is located at:

Users/User Name/Library/Logs/Pixie Session Log.txt

On Windows XP and Vista, the file is located at:

C:\Documents and Settings\User Name\Logs\Pixie Session Log.txt

On Linux the file is located at:

Home/User Name/Logs/Pixie Session Log.txt

Saving the Log File

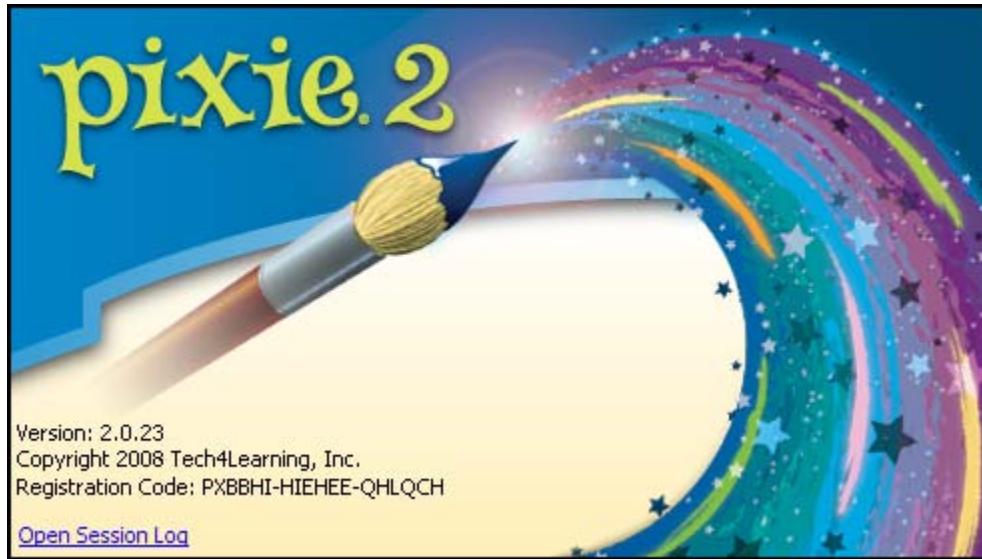
Users can also view and save the log file to a specific location from within Pixie.

After an error occurs, users should save the log file and email it with a description what the user was doing when the error occurred to Tech4Learning technical support at support@tech4learning.com.

On Macintosh, go to the Pixie menu and choose About Pixie.

On Windows and Linux, go to the Help menu and choose About Pixie.

You will see the About dialog.



Click the Open Session Log link.

The session log will open in a text editor.

Save the file to a common location so that it may be attached to an email.

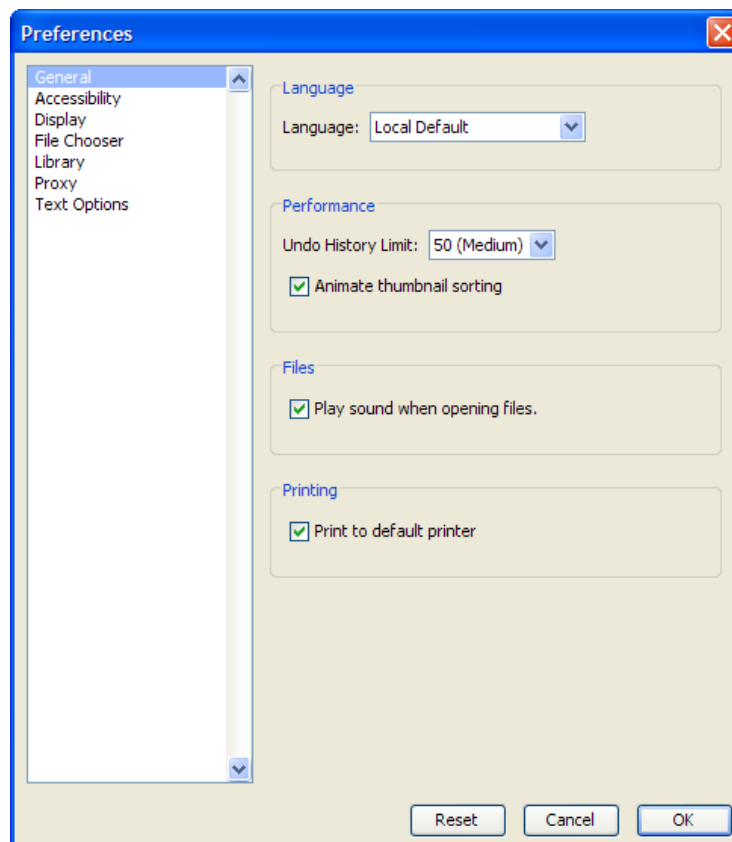
Proxy Server Settings

You can add your school's proxy server settings to Pixie. This will help Pixie communicate with the online content server and Pics4Learning Web site.

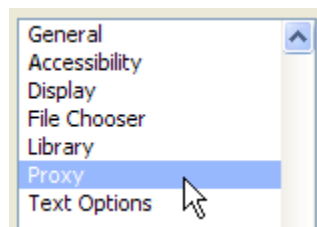
On Windows and Linux, go to the Edit menu and choose Preferences.

Go to the Pixie menu and choose Preferences.

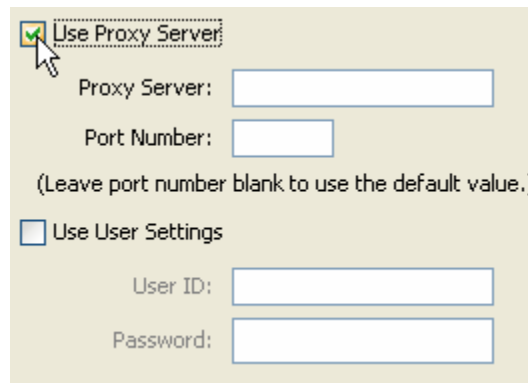
You will see the Preferences dialog.



Click the Proxy option.



Click the Use Proxy Server check box.



Use Proxy Server

Proxy Server:

Port Number:

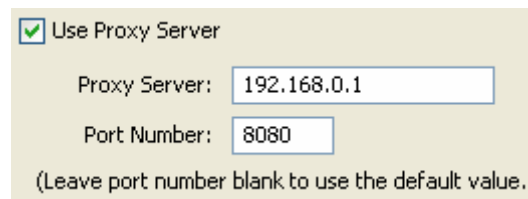
(Leave port number blank to use the default value.)

Use User Settings

User ID:

Password:

Enter the address and port number for the proxy server in the Proxy Server and Port Number fields.



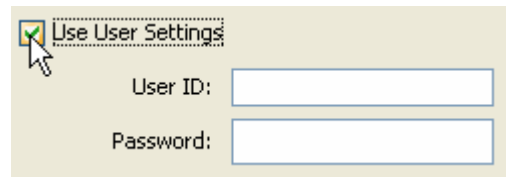
Use Proxy Server

Proxy Server:

Port Number:

(Leave port number blank to use the default value.)

If you have a user ID and password to access the proxy server, click the Use User Settings check box.



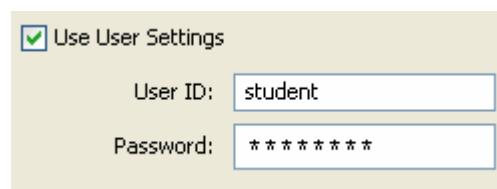
Use User Settings

User ID:

Password:

Enter your user identification in the User ID field.

Enter your password in the Password field.



Use User Settings

User ID:

Password:

Click the OK button.

Your proxy settings will be saved.